

G4BAO bias tee – Errata

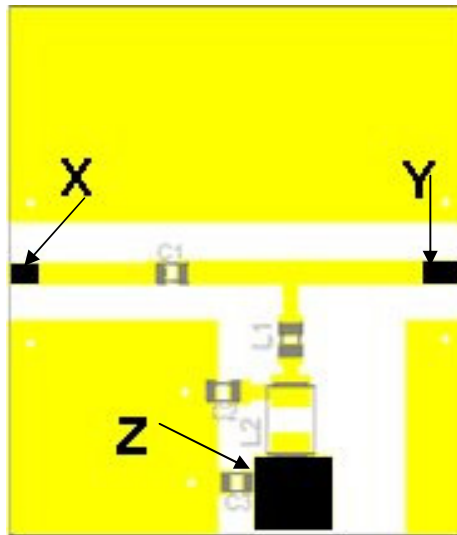
50% Price reduction – Bias tee PCB

Unfortunately, this batch of the Bias Tee PCBs was manufactured with two small errors.

1. The board is 4mm too short to fit in a standard 1000101 37 x 37 x 30 Schuberth tinplate box

A Schuberth 1000101 37 x 37 x 30 CAN be used, but the sides of the box WITHOUT the connectors must be reduced in length 4mm before assembly. The lid will then overhang each end by 2mm.

2. The input, output and DC in pads on the PCB are covered with solder resist.



Before building up the PCB, scrape away the solder resist at points X, Y and Z and tin with solder.